

Watertight Hubs

Die Cast, Insulated and Gasketed

Use:

- Used in applications to connect rigid metal conduit or IMC to a threadless opening in an enclosure.
- May be used in wet or dry locations, indoors or outdoors.
- Suitable for hazardous locations: Class I, Division 2; Class II, Divisions 1 & 2; Class III, Per NEC 501-4(b), 502-4(a), 503-3(a)

Features:

- Rugged metallic construction ensures mechanical protection.
- Die cast design provides clean lines and aesthetic appeal.
- Insulated throat, rated up to 105°C, prevents wire abrasion.
- Integral O-ring provides watertight seal.
- Grounding version provides positive ground for external conductor.
- Unique profile permits easy wrenching.
- Smooth, accurately tapped threads facilitate installation.
- Watertight and corrosion resistant: NEMA 4X.
- NEMA 12.

Material:

Bodies and nuts: Die Cast Zinc
 O-ring: BUNA-N
 Insulator: Polycarbonate
 Ground Screw: Mild Steel
 Size Ranges: 1/2" through 4"

Optional Finishes:

Chrome plating optional add suffix **C**.

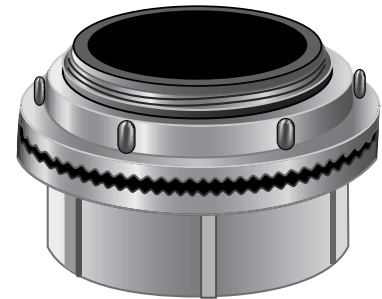
Third Party Certification:



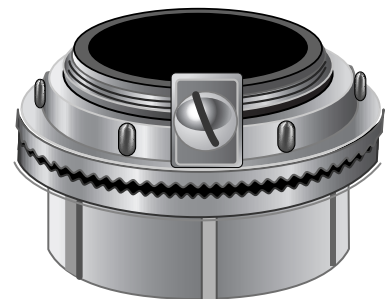
UL Listed
 UL Standard 514B



CSA Certified
 (incl. Class II, Groups E, F, G)
 CSA Standard C22.2-18-98
 NEMA Type 2, 3, 3R, 4, 4X, 5, 12, 13
 NEMA Standard FB-1
 O-Z/Gedney UL File No. E11853
 O-Z/Gedney CSA File No. LR9795



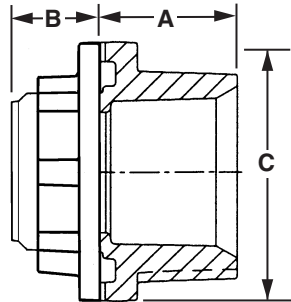
CHM



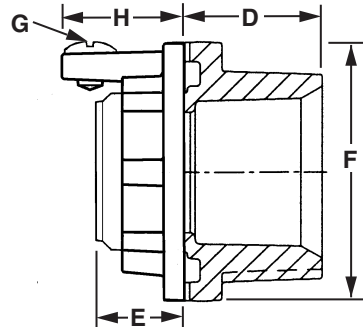
CHMG

Watertight Hubs

Die Cast, Insulated and Gasketed



CHM Series



CHMG Series

Die Cast Hubs - Insulated (All dimensions are in inches.)

Catalog Number*	Trade Size	Hole Dia.		Panel Thickness		Dimensions		
		Min.	Max.	Min.	Max.	A	B	C
CHM-50DT	1/2"	0.86	0.91	0.026	0.25	0.84	0.64	1.44
CHM-75DT	3/4"	1.08	1.14	0.026	0.25	0.94	0.64	1.69
CHM-100DT	1"	1.33	1.41	0.026	0.25	1.03	0.78	2.00
CHM-125DT	1-1/4"	1.67	1.77	0.026	0.25	1.12	0.78	2.38
CHM-150DT	1-1/2"	1.92	2.02	0.062	0.25	1.12	0.78	2.75
CHM-200DT	2"	2.36	2.50	0.062	0.25	1.12	0.78	3.25
CHM-250DT	2-1/2"	2.86	3.00	0.062	0.31	1.56	1.06	3.72
CHM-300DT	3"	3.48	3.63	0.062	0.31	1.56	1.06	4.38
CHM-350DT	3-1/2"	3.98	4.16	0.062	0.31	1.56	1.06	4.94
CHM-400DT	4"	4.48	4.67	0.062	0.31	1.56	1.06	5.47

* For chrome plating, add suffix C.

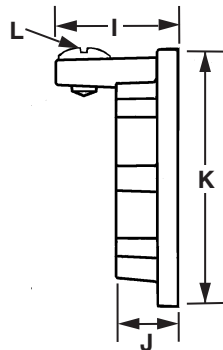
Grounding Style Hubs - Insulated (All dimensions are in inches.)

Catalog Number*	Trade Size	Hole Dia.		Panel Thickness		Dimensions				
		Min.	Max.	Min.	Max.	D	E	F	G	H
CHMG-50DT	1/2"	0.86	0.91	0.026	0.25	0.84	0.64	1.44	10-32X1/4	0.69
CHMG-75DT	3/4"	1.08	1.14	0.026	0.25	0.94	0.64	1.69	10-32X1/4	0.78
CHMG-100DT	1"	1.33	1.41	0.026	0.25	1.03	0.78	2.00	10-32X1/4	0.78
CHMG-125DT	1-1/4"	1.67	1.77	0.026	0.25	1.12	0.78	2.38	1/4-20X3/8	0.81
CHMG-150DT	1-1/2"	1.92	2.02	0.026	0.25	1.12	0.78	2.75	1/4-20X3/8	1.00
CHMG-200DT	2"	2.36	2.50	0.026	0.25	1.12	0.78	3.25	1/4-20X1/2	1.00
CHMG-250DT	2-1/2"	2.86	3.00	0.062	0.31	1.56	1.06	3.72	1/4-20X1/2	1.25
CHMG-300DT	3"	3.48	3.63	0.062	0.31	1.56	1.06	4.38	1/4-20X1/2	1.25
CHMG-350DT	3-1/2"	3.98	4.16	0.062	0.31	1.56	1.06	4.94	1/4-20X1/2	1.31
CHMG-400DT	4"	4.48	4.67	0.062	0.31	1.56	1.06	5.47	1/4-20X1/2	1.31

* For chrome plating, add suffix C.

Watertight Hubs

Grounding Nuts and Hub Spacing Chart



CHML Series

Grounding Nuts (All dimensions are in inches.)							
Catalog Number*	Trade Size	Wire Size		Dimensions			
		Min	Max	I	J	K	L
CHML-50D	1/2"	#14 stranded	#10 stranded	0.69	0.31	1.44	10-32x1/4
CHML-75D	3/4"	#14 stranded	#10 stranded	0.78	0.38	1.69	10-32x1/4
CHML-100D	1"	#14 stranded	#10 stranded	0.78	0.38	2.00	10-32x1/4
CHML-125D	1-1/4"	#10 solid	#6 stranded	0.81	0.44	2.38	1/4-20x3/8
CHML-150D	1-1/2"	#10 solid	#6 stranded	1.00	0.47	2.75	1/4-20x3/8
CHML-200D	2"	#10 solid	#6 stranded	1.00	0.47	3.25	1/4-20x1/2
CHML-250D	2-1/2"	#10 solid	#6 stranded	1.25	0.63	3.72	1/4-20x1/2
CHML-300D	3"	#10 solid	#6 stranded	1.25	0.63	4.38	1/4-20x1/2
CHML-350D	3-1/2"	#10 solid	#6 stranded	1.31	0.69	4.94	1/4-20x1/2
CHML-400D	4"	#10 solid	#6 stranded	1.31	0.69	5.47	1/4-20x1/2

* For chrome plating, add suffix C.

Hub Spacing Chart (All dimensions are in inches.)											
Knockout Hole Size	Trade Size	Hub Spacing									
		1/2"	3/4"	1"	1-1/4"	1-1/2"	2"	2-1/2"	3"	3-1/2"	4"
7/8"	1/2"	1.56									
1-1/8"	3/4"	1.69	1.81								
1-3/8"	1"	1.84	1.97	2.13							
1-3/4"	1-1/4"	2.03	2.16	2.31	2.50						
2"	1-1/2"	2.22	2.34	2.50	2.69	2.88					
2-1/2"	2"	2.47	2.59	2.75	2.97	3.13	3.38				
3"	2-1/2"	2.72	2.84	3.00	3.19	3.38	3.63	3.88			
3-5/8"	3"	3.01	3.16	3.31	3.50	3.69	3.81	4.49	4.50		
4-1/8"	3-1/2"	3.34	3.47	3.63	3.81	4.00	4.25	4.50	4.81	5.13	
4-5/8"	4"	3.59	4.72	3.88	4.06	4.25	4.50	4.75	5.06	5.38	5.75

Dimensions in bold are for centers of conduits of same size, all other dimensions are for centers of conduits of a different size. Minimum spacing dimensions as shown above will give approximately 1/8" clearance between the lock nuts.

Notes